



# Moosalamoo Campground & Area Trails



## Attractions

Moosalamoo Campground is a small, remote campground located at the base of Mt. Moosalamoo, near Voter Brook. Located within the heart of the Moosalamoo National Recreation Area, the campground is located in close proximity to over 70 miles of trail managed for hiking, biking, cross-county skiing, horseback riding, and snowmobiling. The campground is open from Memorial Day through Columbus Day. Reservations for select sites may be made by reserving at least 4 days in advance online at <http://www.recreation.gov>.



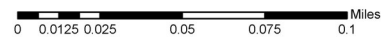
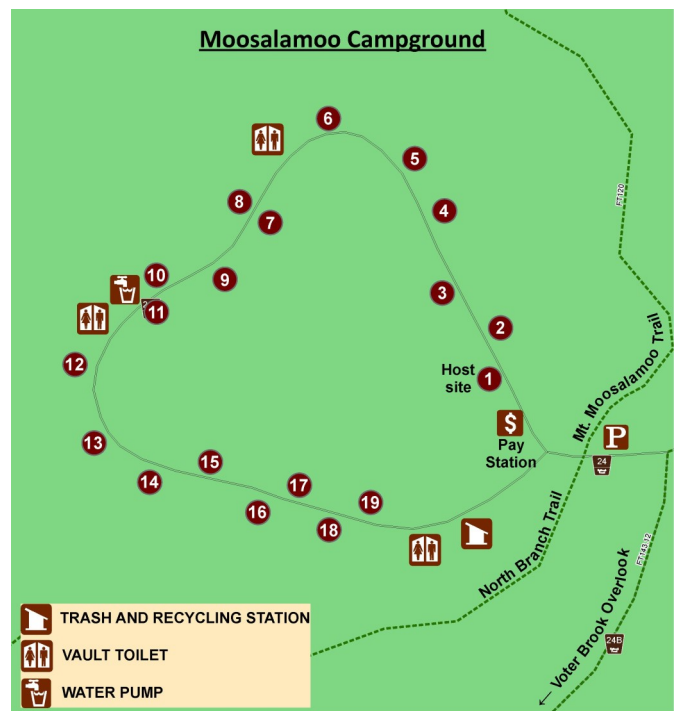
## Access

**From Middlebury**, travel south on Route 7 to the Junction of Route 125. Travel east on Route 125 for 6.8 miles, then turn right onto Forest Road 32. Follow FR 32 for 3.3 miles and turn right onto Forest Road 24. The entrance to the campground loop is at 0.4 miles.

**From Rochester**, travel north on Route 100 to the junction of Route 125. Travel west on Route 125 for 10.9 miles, then turn left onto Forest Road 32. Follow FR 32 for 3.3 miles and turn right onto Forest Road 24. The entrance to the campground loop is at 0.4 miles.

## Campground Facilities

There are 19 campsites irregularly spaced along a wooded campground loop. Each site has a picnic table, fire ring with a grill, and a parking spur with space for two cars. There are three barrier-free vault toilets and one hand pump available for drinking water. There are no showers or hook-ups; however there is trash/recycling service. In the center of the campground loop there is an open play field and recreation opportunities.



## Campground Information & Regulations

- Dogs must be on a leash at all times.
- Quiet Hours are 10:00 PM to 6:00 AM.
- Check out time is 2:00 PM.
- Drinking water is available from a hand pump (well)
- Maximum stay is 14 days in a 30-day period.

## CONTACT INFO

**Green Mountain & Finger Lakes National Forests** · Rochester Ranger District  
 99 Ranger Road, Rochester, VT 05767 · 802-767-4261



# Moosalamoo Campground & Area Trails



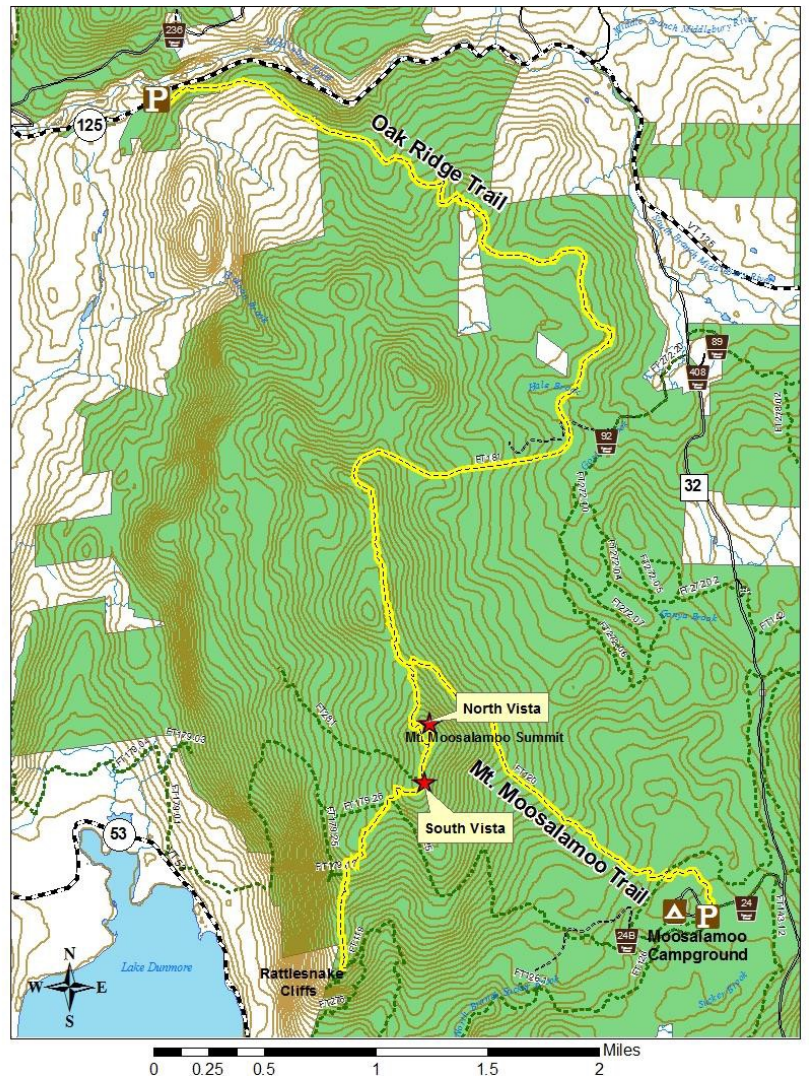
## Trail Information

### Moosalamoo Trail

The trail starts at the trailhead parking lot near the Moosalamoo Campground entrance. It crosses the north branch of Voter Brook and climbs northeast to the Oak Ridge Trail at 2.1 miles, a climb of 1530 feet. The summit of Mt. Moosalamoo and the North Vista are reached by following the Oak Ridge Trail 0.4 miles south and following a 500 foot side trail. To reach the South Vista, which has extensive views to the east, continue an additional 0.2 mi. south on the Oak Ridge Trail. Average trip time is 4 – 5 hours round trip.

### Oak Ridge Trail

From Route 125, the trail climbs south past several old roads and the Moosalamoo Trail, with views near the summit of Mt. Moosalamoo, a climb of 870 feet. The trail then descends on a gentle ridge with views of Lake Dunmore, Lake Champlain, and Lake George. The trail ends at the Rattlesnake Cliffs Trail at 8.1 miles. Average trip time is 8 ½ – 9 ½ hours round trip.



## Directions

### Moosalamoo Trailhead and Parking

**From Middlebury**, travel south on Route 7 to the junction with Route 125. Travel east on Route 125 for 6.8 miles, then turn right onto Forest Road 32 and follow it 3.3 miles. Turn right onto Forest Road 24, which is the access road to Moosalamoo Campground. Parking is on the right at 0.4 miles, outside of the campground gate.

**From Rochester**, travel north on Route 100 to the junction with Route 125. Travel west on Route 125 for 10.9 miles, then turn left onto Forest Road 32. Follow FR 32 for 3.3 miles and turn right onto Forest Road 24, which is the access road to Moosalamoo Campground. Trailhead Parking is on the right at 0.4 miles, outside of the campground gate.

### Oak Ridge Trailhead and Parking

**From Middlebury**, travel south on Route 7 to the junction with Route 125. Travel east on Route 125 for 1.8 miles. Parking is on the right.

**From Rochester**, travel north on Route 100 to the junction with Route 125. Travel west on Route 125 for 13.9 miles. Parking is on the left.

